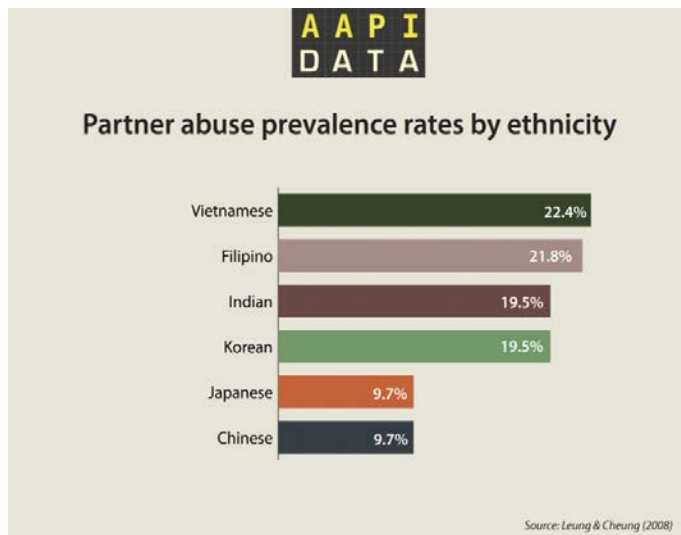


Statistics on Gender-Based Violence in Asian and Pacific Islander Communities

December 2017

Domestic Violence



Data from Leung C & Cheung C. A Prevalence Study on Partner Abuse in Six Asian American Ethnic Groups in the USA. *International Social Work*. 51(5). 2008: 635 – 649.

- ◆ 21 – 55% of Asian women report experiencing intimate physical and/or sexual violence during their lifetime, based on a compilation of disaggregated samples of Asian ethnicities in local communities.

[Yoshihama M & Dabby C. Facts & Stats Report: Domestic Violence in Asian and Pacific Islander Homes. Oakland, CA: Asian Pacific Institute on Gender-Based Violence: 2015.](#)

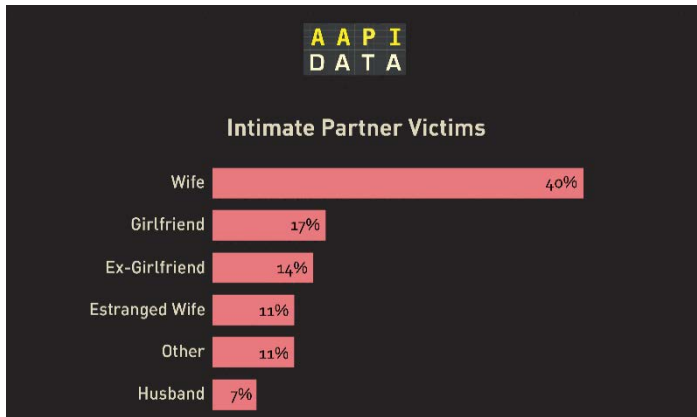
- ◆ 18% of Asian or Pacific Islander women reported experiencing rape, physical violence, and/or stalking by an intimate partner in their lifetime in a national survey, as compared to 48% of American Indians or Alaska Native women, 45% of Black women, 34% of Hispanic women, and 37% of White women.

[Centers for Disease Control and Prevention. 2010-2012 National Intimate Partner and Sexual Violence Survey. Atlanta, GA: Author: 2017.](#)

Domestic Violence-Related Homicide

- ◆ In 236 cases involving homicides of API women, 58% of cases with known causes were related to intimate partner violence.
- ◆ Of the intimate partner violence-related homicides, 81% of perpetrators were the victim's current intimate partner, and 10% were a former intimate partner.

[Petrosky E, Blair JM, Betz CJ, Fowler KA, Jack SP, Lyons BH. Racial and Ethnic Differences in Homicides of Adult Women and the Role of Intimate Partner Violence. *Centers for Disease Control and Prevention: Morbidity and Mortality Weekly Report*: 66\(28\). 2017: 741-746.](#)



- ◆ In a six-year period, 160 cases in Asian families resulted in 226 fatalities, of which 72% were adult homicide victims, 10% were child homicide victims, and 18% were suicide deaths.
- ◆ 68% of victims were intimate partners (current, estranged, or ex-partners), of which 111 were women and 14 were men.

- ◆ 83% of homicide perpetrators were men, 14% were women, 3% unknown.
- ◆ Children were the second largest group of victims, and the parents of wives and girlfriends were the third largest group.

[Dabby C. Patel H. & Poore G. Shattered Lives: Homicides, Domestic Violence and Asian Families. Oakland, CA: Asian Pacific Institute on Gender-Based Violence; 2010.](#)

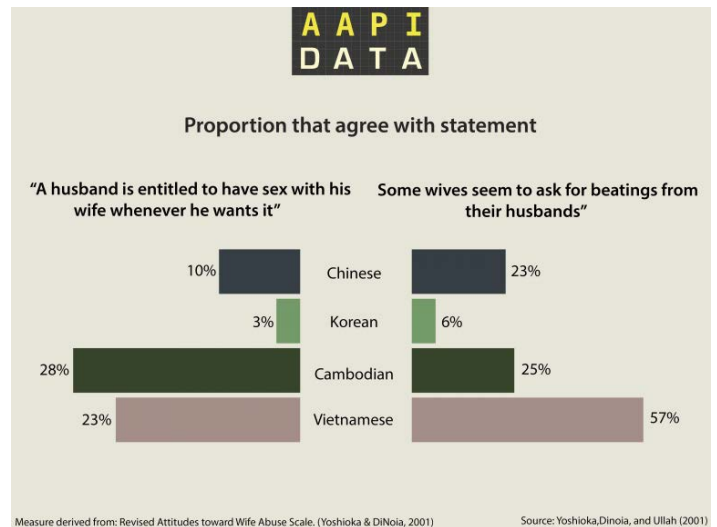
Sexual Violence

- ◆ Of API women, 23% experienced some form of contact sexual violence, 10% experienced completed or attempted rape, and 21% had non-contact unwanted sexual experiences during their lifetime.
- ◆ Of API men, 9% experienced one or more forms of contact sexual violence, and 9% had non-contact unwanted sexual experiences during their lifetime.

[Centers for Disease Control and Prevention. National Intimate Partner and Sexual Violence Survey: 2010-2012 State Report. Atlanta, GA: Author; 2017.](#)

- ◆ 56% of Filipinas and 64% of Indian and Pakistani women had experienced sexual violence by an intimate partner in a study of 143 domestic violence survivors.

[Yoshihama M, Bybee D, Dabby C, & Blazeovski J. Lifecourse Experiences of Intimate Partner Violence and Help-Seeking Among Filipina, Indian, and Pakistani Women: Implications for Justice System Responses. Washington, DC: National Institute of Justice; 2010.](#)



Measure derived from: Revised Attitudes toward Wife Abuse Scale. (Yoshioka & DiNoia, 2001) Source: Yoshioka, DiNoia, and Ullah (2001)

Data from Yoshioka MR, DiNoia J, & Ullah K. Attitudes Towards Marital Violence: An Examination of Four Asian Communities. *Violence Against Women*: 7(8). 2001; 900-926.

Stalking

- ◆ 8% of API women experienced stalking in their lifetime.

[Centers for Disease Control and Prevention. National Intimate Partner and Sexual Violence Survey: 2010-2012 State Report. Atlanta, GA: Author; 2017.](#)

- ◆ 68% of Filipina and 50% of Indian and Pakistani domestic violence survivors reported being stalked by an intimate partner.

[Yoshihama M, Bybee D, Dabby C, & Blazeviski J. Lifecourse Experiences of Intimate Partner Violence and Help-Seeking Among Filipina, Indian, and Pakistani Women: Implications for Justice System Responses. Washington, DC: National Institute of Justice; 2010.](#)

Children's Exposure to Family Violence

- ◆ 70% of Cambodians, 61% of Chinese, 80% of Koreans, 79% of South Asians, and 72% of Vietnamese men and women reported being hit regularly as children.

- ◆ 28% of Cambodians, 18% of Chinese, 30% of Koreans, 8% of South Asians, and 27% of Vietnamese witnessed their fathers regularly hit their mothers.

[Yoshioka MR, Dang Q, Shewmangal N, Chan C, & Tan CI. Asian Family Violence Report: A Study of the Chinese, Cambodian, Korean, South Asian, and Vietnamese Communities in Massachusetts. Boston, MA: Asian Task Force Against Domestic Violence, Inc.; 2000.](#)

- ◆ In a review of 160 Asian homicide cases, 22 children were killed. Of the 63 non-fatal child victims for whom information was available, 60 were either on site when the homicides occurred, survived an attempted homicide, were eye or ear witnesses to a maternal homicide, or discovered the bodies.

[Dabby C, Patel H, & Poore G. Shattered Lives: Homicides, Domestic Violence and Asian Families. Oakland, CA: Asian Pacific Institute on Gender-Based Violence; 2010.](#)

Trafficking

- ◆ Of the 3,116 trafficking survivors with specified ethnicities who reached out to Polaris operated hotlines in 2016, 23% (715) were Asian.

[Polaris Project. 2016 Statistics From the National Human Trafficking Hotline and BeFree Textline. Washington, DC: Author; 2016.](#)

Additional statistics and resources are available on our website at api-gbv.org.

Graphics from aapidata.com



Funding for this document was made available through the US Department of Health and Human Services, Grants #90EV0430. The viewpoints contained in this document are solely the responsibility of the author(s) and do not represent the official views or policies of the department and do not in any way constitute an endorsement by the Department of Health and Human Services.